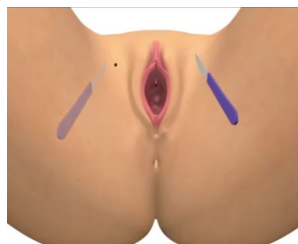


OUT-IN Technique

Antibiotic Protocol: Use Hospital implant antibiotic protocol or:
2 g. of cefazolina during the surgery and 500 mg. of amoxiciline for 5 days after surgery

SURGICAL GUIDE

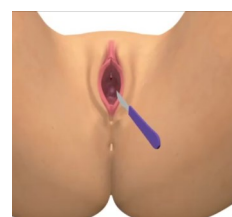


1. Insertion Points location:

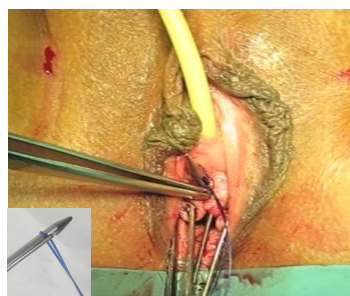
At the level of the clitoris, locate the groin area incision just 1 cm. inferior to the to the Adductor Longus Tendinous insertion. Perform two small skin incisions at the needle entry points with the scalpel.

2. Perform 2 cm longitudinal incisión on the anterior vaginal wall On the medial urethra level. KIM system is 1,2 cm wide, a 20% more than other slings in the market.

Perform paraurethral scissor **wide** dissection to create enough space to leave the sling fully extended.



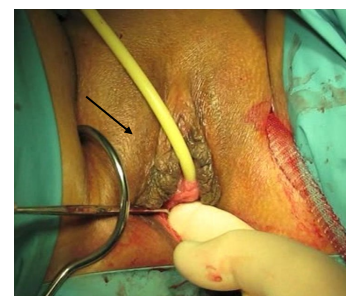
3. Insert the needle on the patient's left side from the insertion point to the vagina by surgeons finger guidance.



4. Once the tip of the needle appears at the vaginal incision, insert the Kim traction suture inside the groove of the needle tip.



5. Pull the needle back and unhook the sling thread from the needle.



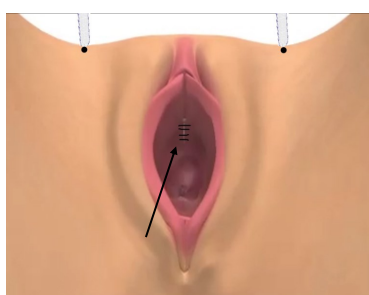
6. Repeat steps 3, 4 and 5 on the contralateral side.



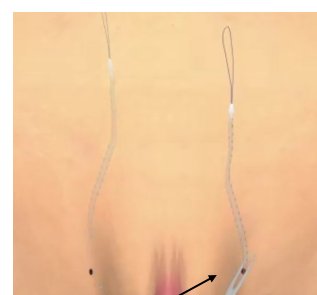
7. Keep the center of the mesh completely extended with the aid of your finger while advancing it towards the urethra by pulling softly and slowly from both ends.



8. Make the final mesh adjustment. Confirm that the mesh lies **flat and in full contact with the urethra**. Do not leave any space between the urethra and the sling.



9. Before cutting the excess of mesh at the skin level close the vaginal incision.



10. Cut the excess of mesh at the skin level.